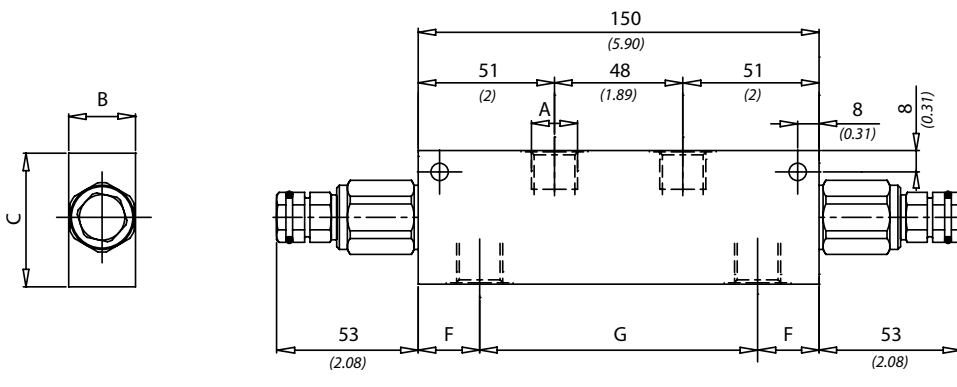
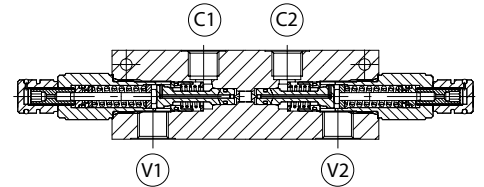
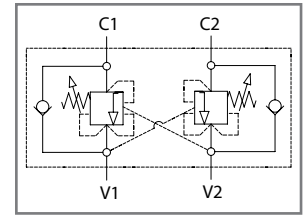
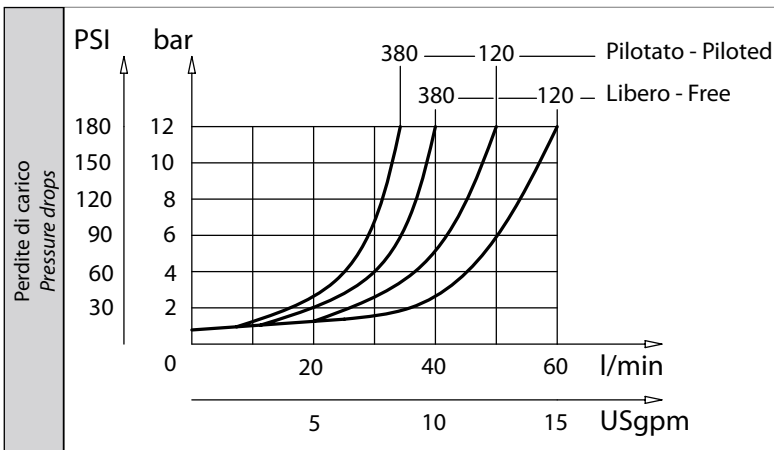




| Dati tecnici Technical data | |
|---|--|
| Viscosità fluido Fluid viscosity | 10-500 mm ² /s 45 to 2000 ssu (6 to 420 cSt) |
| Classe di contaminazione Filtration | ISO code 16/13 SAE class 4 or better |
| Temperatura fluido Fluid temperature | -20°C +80°C -4°F +176°F |
| Temperatura ambiente Ambient temperature | -20°C +50°C -4°F +122°F |
| Settaggio valvola di massima: almeno 1,3 volte il carico più alto usato. Relief valve setting: at least 1.3 times the highest expected load. | |



[mm / Inches]



| Codice ordinazione Ordering code | | | |
|-------------------------------------|------------------------------|---|---|
| VBCC - X - Y - K | | | |
| X | Dimensione / Size | K | Materiale / Material |
| 140 | BSPP 1/4 | S | Corpo in acciaio (Steel body) |
| 380 | BSPP 3/8 | | |
| 120 | BSPP 1/2 | | |
| Y | Molla - Spring | Incremento pressione al giro Press. increase | Taratura standard Std. setting (Q=5 l/min) |
| 1 | 30/210 bar (400/3000 PSI) | 70 bar/turn (1000 PSI/turn) | 200 bar (2900 PSI) |
| 2 | 60/350 bar (850/3500 PSI) | 120 bar/turn (1700 PSI/turn) | 350 bar (5000 PSI) |

| Caratteristiche tecniche Technical performances | | | | | | | |
|--|----------|--|--|-----------|------------|---|---------------------------------------|
| Codice Code | A | Portata Max Max flow l/min - USgpm | Pressione Max Max pressure bar/PSI | F | G | Peso approssimativo Approx weight Kg / lb | Rapporto di pilotaggio Pilot ratio |
| VBCC140 | BSPP 1/4 | 30 (8) | 350 (5000) | 23 (0.90) | 104 (4.09) | 1,5 (3.3) | 1:4.25 |
| VBCC380 | BSPP 3/8 | 40 (10.5) | | | | | |
| VBCC120 | BSPP 1/2 | 60 (16) | | 21 (0.83) | 108 (4.25) | | |

