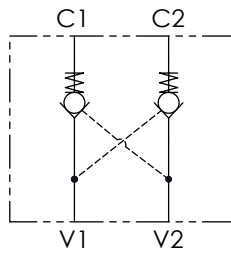




Hydraulic circuit



Technical data

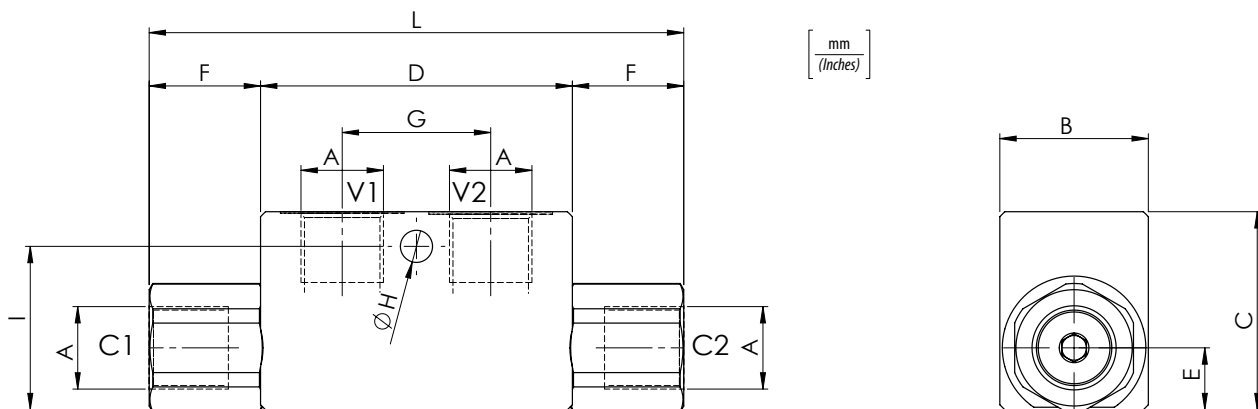
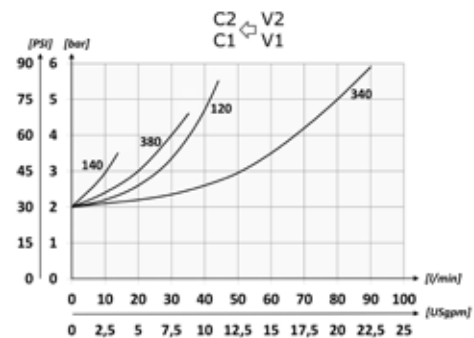
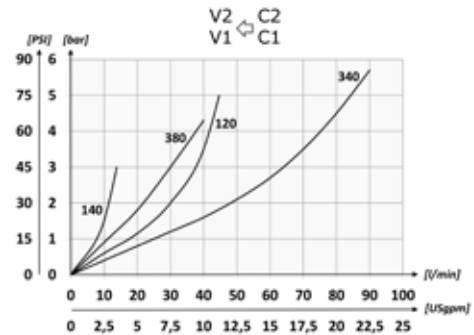
Mineral oil	ISO 6743/4 (DIN 51524)	
Oil viscosity	15-250 mm ² /s (15 to 250 cSt)	
Max contamination index with filter	ISO 4406:1999 Classe 19/17/14	
Oil temperature	-20°C +80°C	-4°F + 176°F
Ambient temperature	-20°C +50°C	-4°F + 122°F
It is necessary a filter use to protect the valve (advised filtration 15 µm)		
Max leakage	0,015 in ³ /min - 5 drops/min	

Ordering code

01	02
VRDE	

01	Double acting pilot check valves	VRDE
02	Size	BSPP 1/4
		BSPP 3/8
		BSPP 1/2
		BSPP 3/4

Performances



Technical characteristics

Type	A	Max flow (USgpm)	Max pressure (PSI)	B	C	D	E	F	G	H	I	L	Approx weight (lb)	Pilot ratio
VRDE140	BSPP 1/4	15 (4)	320 (4640)	30	40	63	12,5	22,5	30	6,5 (0,26)	33	108	0,64 (1,41)	1:4
VRDE380	BSPP 3/8	35 (9,2)		(1,18)	(1,57)	(2,48)	(0,49)	(0,89)	(1,18)		(1,30)	(4,25)	0,60 (1,32)	
VRDE120	BSPP 1/2	45 (11,9)	300 (4350)	35	50	82	16,5	31,5	36	8,5 (0,33)	35	145	1,10 (2,42)	
VRDE340	BSPP 3/4	70 (18,5)		(1,38)	(1,97)	(3,23)	(0,65)	(1,24)	(1,42)		(1,38)	(5,71)	2 (4,40)	