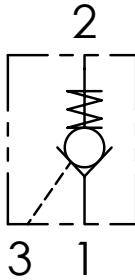




Hydraulic circuit



Technical data

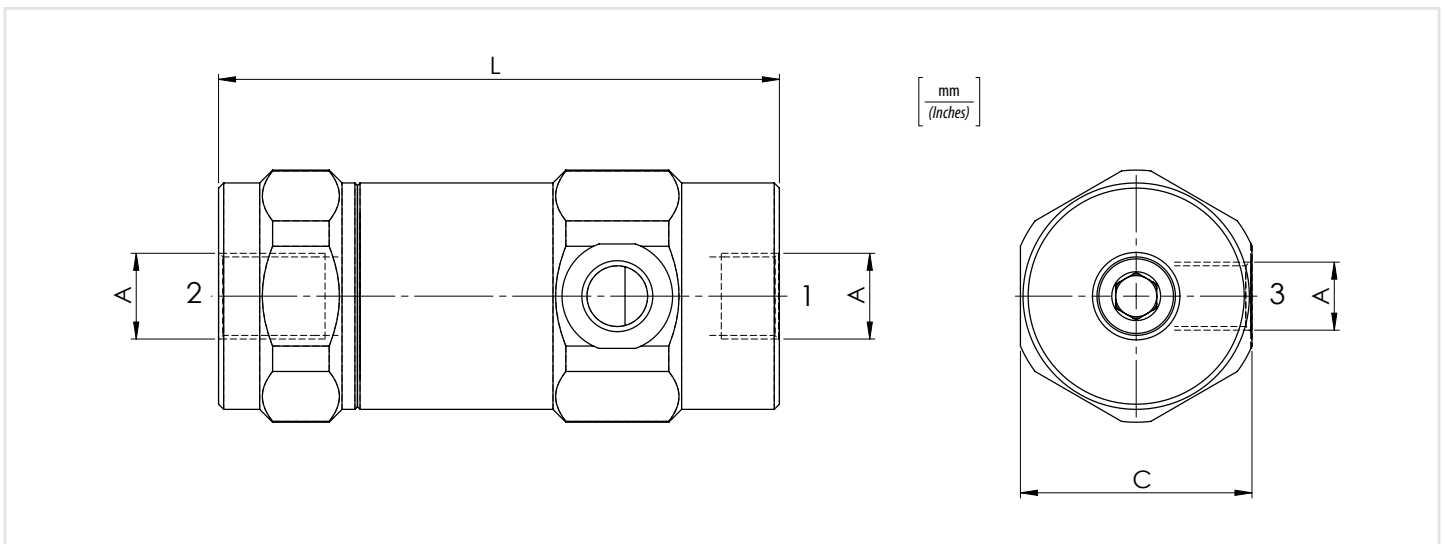
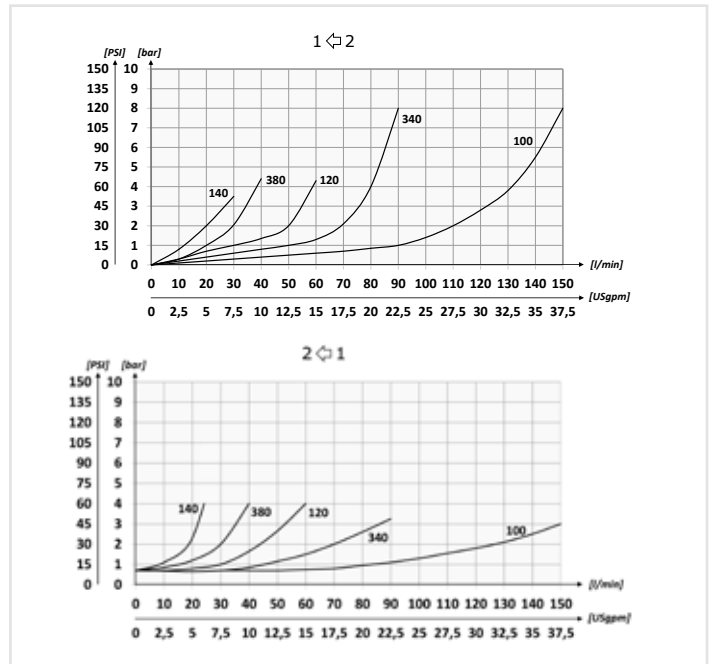
Mineral oil	ISO 6743/4 (DIN 51524)		
Oil viscosity	15-250 mm ² /s (15 to 250 cSt)		
Max contamination index with filter	ISO 4406:1999 Classe 19/17/14		
Oil temperature	-20°C +80°C	-4°F + 176°F	
Ambient temperature	-20°C +50°C	-4°F + 122°F	
It is necessary a filter use to protect the valve (advised filtration 15 µm)			
Max leakage	0,015 in ³ /min - 5 drops/min		

Ordering code

01	02
VRPE	

01	Single acting pilot check valves	VRPE
02	Size	BSPP 1/4 140
		BSPP 3/8 380
		BSPP 1/2 120
		BSPP 3/4 340
		BSPP 1 100

Performances



Technical characteristics

Type	A	Max flow (USgpm)	Max pressure (PSI)	L	C	Approx weight (lb)	Pilot ratio
VRPE140	BSPP 1/4	25 (6.6)	350 (5075)	96 (3.78)	40 (1.57)	0,84 (1.85)	1:5.3
VRPE380	BSPP 3/8	40 (10.6)		109 (4.29)	45 (1.77)		1,14 (2.51)
VRPE120	BSPP 1/2	60 (15.9)		122 (4.80)	55 (2.17)	1,24 (2.73)	1:4.2
VRPE340	BSPP 3/4	100 (26.4)	300 (4350)	132 (5.20)	65 (2.56)	3,22 (7.10)	1:4
VRPE100	BSPP 1	150 (39.6)		166 (6.54)	65 (2.56)		1:4.1