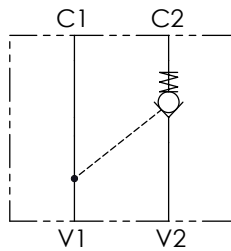


Hydraulic circuit

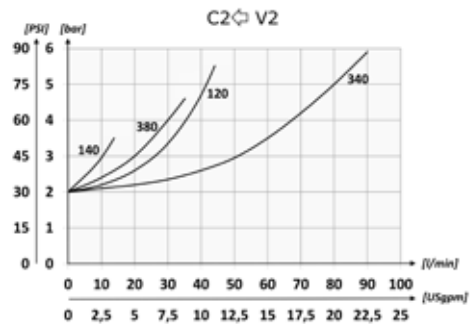
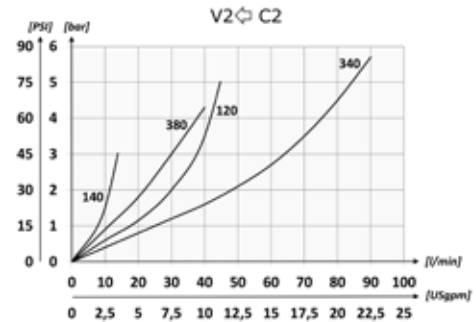


Ordering code

01	02
VRSE	

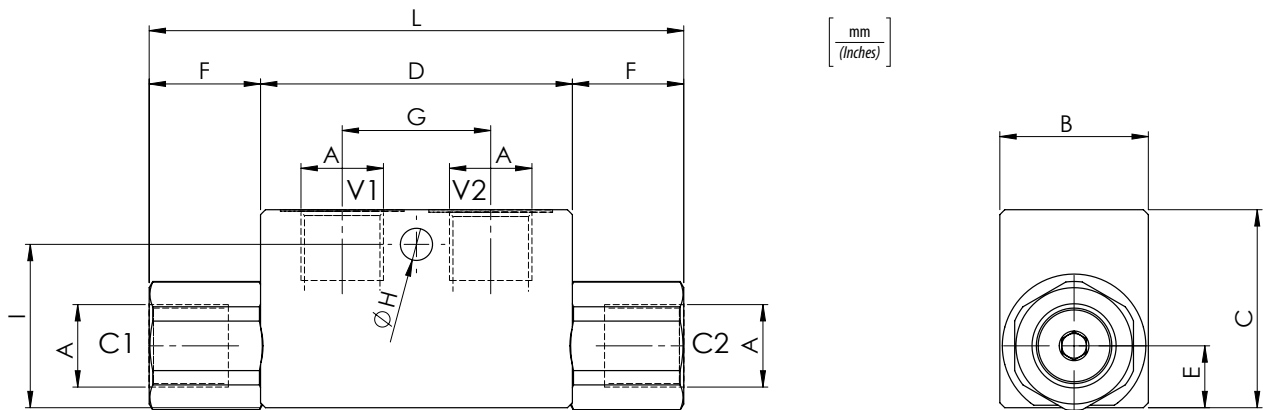
01	Single acting pilot check valves	VRSE
02	Size	BSPP 1/4 140
		BSPP 3/8 380
		BSPP 1/2 120
		BSPP 3/4 340

Performances



Technical data

Mineral oil	ISO 6743/4 (DIN 51524)	
Oil viscosity	15-250 mm²/s (15 to 250 cSt)	
Max contamination index with filter	ISO 4406:1999 Classe 19/17/14	
Oil temperature	-20°C +80°C	-4°F +176°F
Ambient temperature	-20°C +50°C	-4°F +122°F
It is necessary a filter use to protect the valve (advised filtration 15 µm)		
Max leakage	0,015 in³/min - 5 drops/min	



Technical characteristics

Type	A	Max flow (USgpm)	Max pressure (PSI)	B	C	D	E	F	G	H	I	L	Approx weight (lb)	Pilot ratio
VRSE140	BSPP 1/4	15 (4)	320 (4640)	30 (1.18)	40 (1.57)	63 (2.48)	12,5 (0.49)	22,5 (0.89)	30 (1.18)	6,5 (0.26)	33 (1.30)	108 (4.25)	0,64 (1.41)	1:4
VRSE380	BSPP 3/8	35 (9.2)											0,59 (1.30)	
VRSE120	BSPP 1/2	45 (11.9)	300 (4350)	35 (1.38)	50 (1.97)	82 (3.23)	16,5 (0.65)	31,5 (1.24)	36 (1.42)	35 (1.38)	145 (5.71)	1,08 (2.38)		
VRSE340	BSPP 3/4	70 (18.5)	40 (1.57)	60 (2.36)	100 (3.94)	22,5 (0.89)	46 (1.81)	50 (1.97)	8,5 (0.33)	50 (1.97)	192 (7.56)	2 (4.41)	1:2.9	